

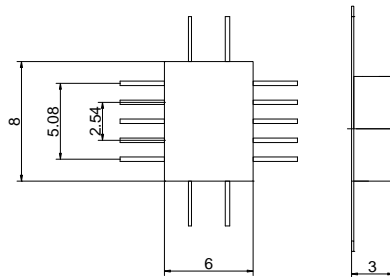
Features

- Small Size
- Low Dissipation Power
- High Phase Accuracy

Electrical Specifications

Part Number	Frequency Range(GHz)	Bits(#)	LSB(⁰)	I.L.(dB)	Insertion Loss Variation(dB)	VSWR	Phase Variation (⁰)	Package
LT-C162YA	0.9~1.3	6	5.625	6.5	±0.6	1.5	±3	die/S04/S05/S12
LT-C162YB	1.2~1.4	6	5.625	6.5	±0.6	1.5	±3	die/S04/S05/S12
LT-C163YA	2.2~2.6	6	5.625	6.5	±0.7	1.6	±4	die/S04/S05/S12
LT-C163YB	2.7~3.5	6	5.625	6.5	±0.7	1.6	±4	die/S04/S05/S12
LT-C164YB	5.0~6.0	5	11.25	7	±0.8	1.7	±5	die/S05/B12
LT-C165YA	7.7~8.5	5	11.25	7	±0.9	1.8	±5	die/B12
LT-C165YB	9.0~10.0	5	11.25	8	±0.9	1.8	±5	die/B12
LT-C165Y	8.0~12.0	6	5.625	11	±1.5	2	±9	die/B12

Typical Outline Drawing



Eleading Technologies Ltd.

F5102, Yunshenchu, Yuanlin Rd., Shatoujiao, Shenzhen, China. Zip 518081. Phn. ++86, 755, 2528 5648 Fax. 2528

eleading@vip.163.com sales@eleadingchina.com www.eleadingchina.com

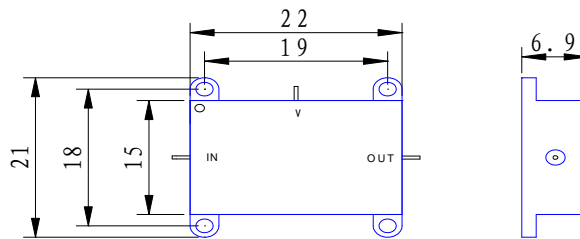
Features

- Low Insertion Loss
- Continuous Variable Phase
- Guaranteed Monotonicity

Electrical Specifications

Part Number	IF(MHz)	Bandwidth(MHz)	I.L.(dB)	Phase Range(°)	VSWR	Control Voltage(V)	Package
LT-C301LA	10.7	1	0.6	0~180	1.6	0.5~12	S21/F04/B17
LT-C301LB	21.4	2	0.8		1.6	0.5~12	S21/F04/B17
LT-C301LC	30	3	1		1.6	0.5~12	S21/F04/B17
LT-C301LD	60	6	1.1		1.6	0.5~15	S21/F04/B17
LT-C301LE	70	7	1.2		1.6	0.5~15	S21/F04/B17
LT-C301LF	140	14	1.2		1.6	0.5~15	S21/F04/B17
LT-C301LG	450	45	1.3		1.6	0.5~15	S21/F04/B17

Typical Drawing



Eleading Technologies Ltd.

F5102, Yunshenchu, Yuanlin Rd., Shatoujiao, Shenzhen, China. Zip 518081. Phn. ++86, 755, 2528 5648 Fax. 2528

eleading@vip.163.com sales@eleadingchina.com www.eleadingchina.com

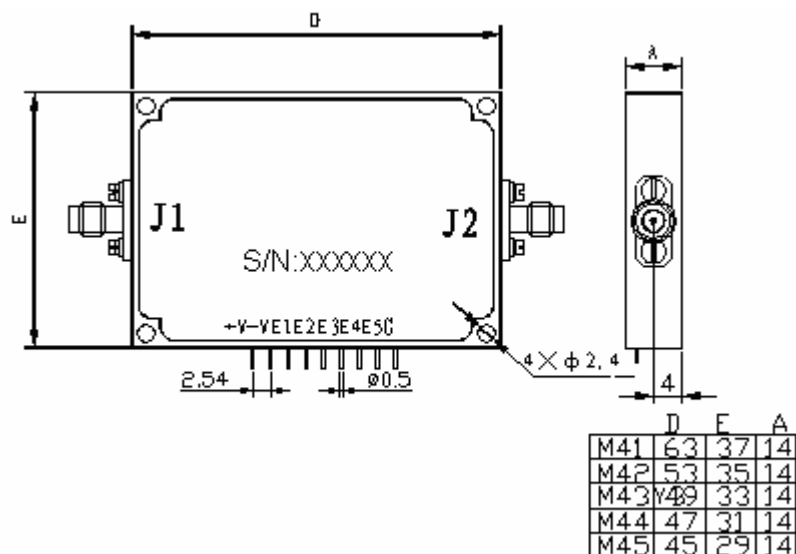
Features

- Low Insertion Loss
- Wide Band
- High Accuracy
- TTL Control

Electrical Specifications

Part number	Frequency Range(GHz)	Relative Bandwidth	Step (°)	PhaseShift Range (°)	I.L. (dBmax)	Phase Difference (°) max	ΔI.L. (dBmax)	VSWR max	Power Rating cw (w)	Package
LT-CY52110	0.5-1	30%	11.25	0~ 348.75	1.6	±2	0.45	1.30	5	M41
LT-CY52120	1—2	30%	11.25	0~ 348.75	2.0	±2	0.45	1.30	5	M41
LT-CY52130	2—4	30%	11.25	0~ 348.75	2.5	±3	0.55	1.40	5	M42
LT-CY52140	4—8	30%	11.25	0~ 348.75	3.5	±4	0.65	1.60	2	M43
LT-CY52150	8—12	30%	11.25	0~ 348.75	5.0	±5	0.85	1.80	2	M44
LT-CY52160	12—18	30%	11.25	0~ 348.75	8.0	±6	1.10	2.00	1	M45

Typical Drawing



Notes:

1. Power supply: +V= +5V, 150mA max; -V=-50V, 150mA max.
2. E1, E2, E4, E5 = TTL control port; E1-22.5°, E2-45°, E3-90°, E4-180°
3. The voltage can't exceed 20%.

Eleading Technologies Ltd.

F5102, Yunshenchu, Yuanlin Rd., Shatoujiao, Shenzhen, China. Zip 518081. Phn. ++86,755,2528 5648 Fax.2528

eleading@vip.163.com sales@eleadingchina.com www.eleavingchina.com

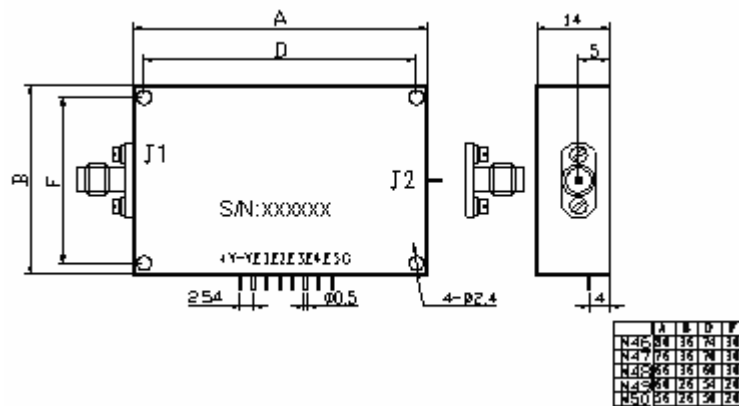
Features

- Low Insertion Loss
- High Accuracy
- Non-dispersive
- TTL Control

Electrical Specifications

Part Number	Frequency Range(GHz)	Relative Bandwidth	Step (°)	PhaseShift Range (°)	I.L. (dB) max	Phase Difference (°) max	ΔI.L. (dB) max	VSWR max	Power Rating cw (w)	Package
LT-CY52210	0.5-1	20%	11.25	0 ~ 337.5	1.8	±3.0	0.4	1.30	5	M46
LT-CY52220	1—2	15%	11.25	0 ~ 348.75	2.1	±3.0	0.2	1.35	5	M46
LT-CY52230	2—4	15%	11.25	0 ~ 348.75	3.0	±3.0	0.3	1.40	5	M47
LT-CY52240	4—8	13%	11.25	0 ~ 348.75	4.5	±4.0	0.4	1.50	2	M48
LT-CY52250	8—12	12%	11.25	0° to 48.75°	6.0	±5.0	0.5	1.80	2	M49
LT-CY52260	12—18	10%	11.25	0° to 48.75°	9.0	±6.0	1.6	2.00	1	M50

Typical Drawing



Notes:

1. Power supply: +V= +5V, 180mA max; -V=-50V, 180mA max.
2. E1, E2, E3, E4, E5 = TTL control port; E1-11.25°、E2-22.5°、E3-45°、E4-90°、E5-180°
3. The voltage can't exceed 20%.

Eleading Technologies Ltd.

F5102, Yunshenchu, Yuanlin Rd., Shatoujiao, Shenzhen, China. Zip 518081. Phn. ++86,755,2528 5648 Fax.2528

eleading@vip.163.com sales@eleadingchina.com www.eleavingchina.com

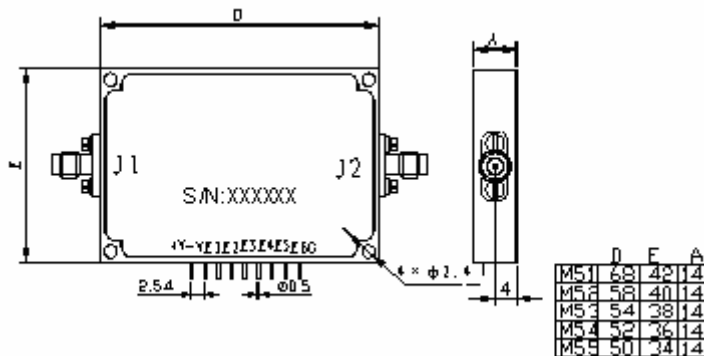
Features

- Low Insertion Loss
- High Accuracy
- Wide Band
- TTL Control

Electrical Specifications

PartNumber	Frequency Range(GHz)	Relative Bandwidth	Step (°)	PhaseShift Range (°)	I.L. (dB) max	Phase Difference (°) max	ΔI.L. (dB) max	VSWR max	Power Rating cw (w)	Package
LT-CY62110	0.5—1	30%	5.6	0~354.5	1.8	±2	0.5	1.30	5	M51
LT-CY62120	1—2	30%	5.6	0~354.5	2.2	±2	0.5	1.30	5	M51
LT-CY62130	2—4	30%	5.6	0~354.5	2.8	±3	0.6	1.40	5	M52
LT-CY62140	4—8	30%	5.6	0~354.5	4.0	±4	0.7	1.50	2	M53
LT-CY62150	8—12	30%	5.6	0~354.5	6.0	±5	0.9	1.70	2	M54
LT-CY62160	12—18	30%	5.6	0~354.5	9.0	±6	1.2	2.00	1	M55

Typical Drawing



Notes:

1. Power supply: +V= +5V, 210mA max; -V=-50V, 210mA max.
2. E1, E2, E3, E4, E5, E6= TTL control port; E1-5.6°, E2-11.25°, E3-22.5°, E4-45°, E5-90°, E6-180°;
3. The voltage can't exceed 20%.

Eleading Technologies Ltd.

F5102, Yunshenchu, Yuanlin Rd., Shatoujiao, Shenzhen, China. Zip 518081. Phn. ++86, 755, 2528 5648 Fax. 2528

eleading@vip.163.com sales@eleadingchina.com www.eleadingchina.com

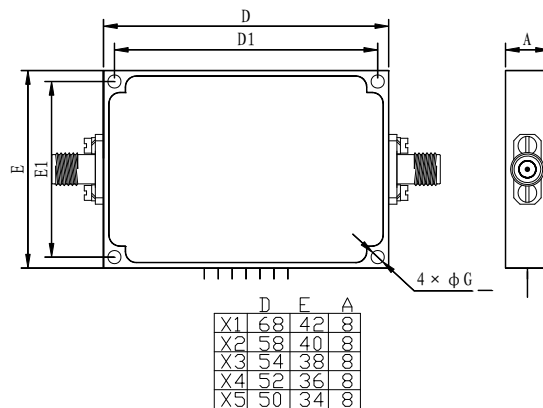
Features

- High Accuracy
- Low Insertion Loss
- TTL Control

Electrical Specifications

Part number	Frequency Range(GHz)	Relative Bandwidth	Step (°)	PhaseShift Range (°)	I.L. (dB) max	Phase Difference (°) max	ΔI.L. (dB) max	VSWR max	Power Rating cw (w)	Package
LT-CY62220	1—2	15%	5.6	354.4	2.0	±2.0	0.2	1.30	5	X1
LT-CY62230	2—4	15%	5.6	354.4	3.0	±3.0	0.3	1.40	5	X2
LT-CY62240	4—8	13%	5.6	354.4	5.0	±4.0	0.4	1.50	2	X3
LT-CY62250	8—12	12%	5.6	354.4	6.0	±5.0	0.5	1.70	2	X4
LT-CY62260	12—18	10%	5.6	354.4	9.0	±6.0	1.6	2.00	1	X5

Typical Drawing



Notes:

1. Power supply: +V= +5V, 210mA max; -V=-50V, 210mA max.
2. E1, E2, E3, E4, E5, E6= TTL control port; E1-5.6°、E2-11.25°、E3-22.5°、E4-45°、E5-90°、E6-180°;
3. The voltage can't exceed 20%.

Eleading Technologies Ltd.

F5102, Yunshenchu, Yuanlin Rd., Shatoujiao, Shenzhen, China. Zip 518081. Phn. ++86, 755, 2528 5648 Fax. 2528

eleading@vip.163.com sales@eleadingchina.com www.eleadingchina.com